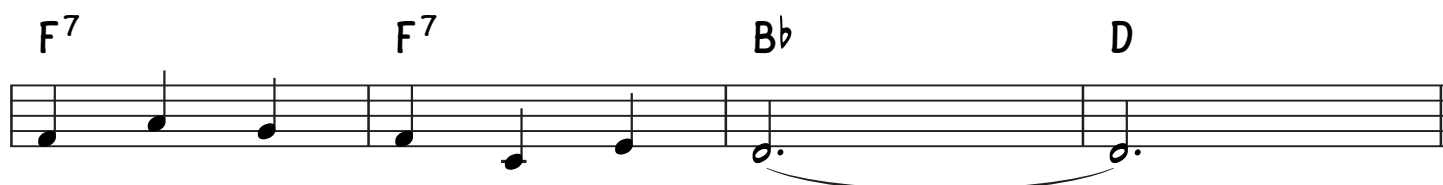
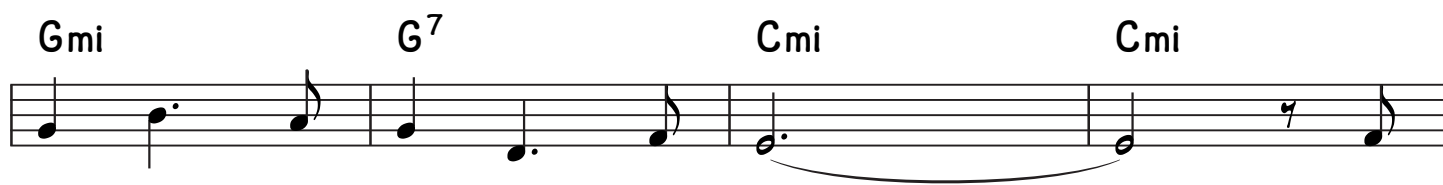
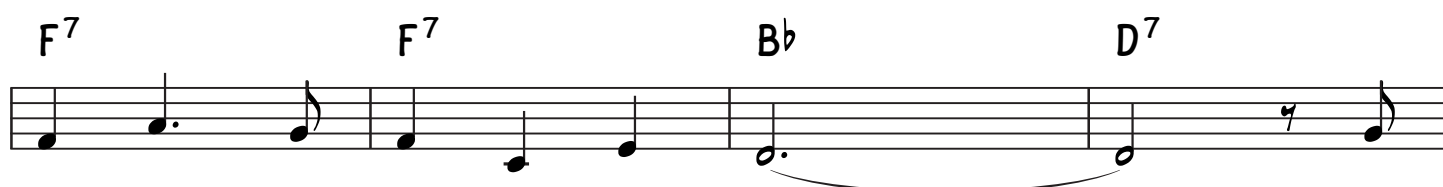
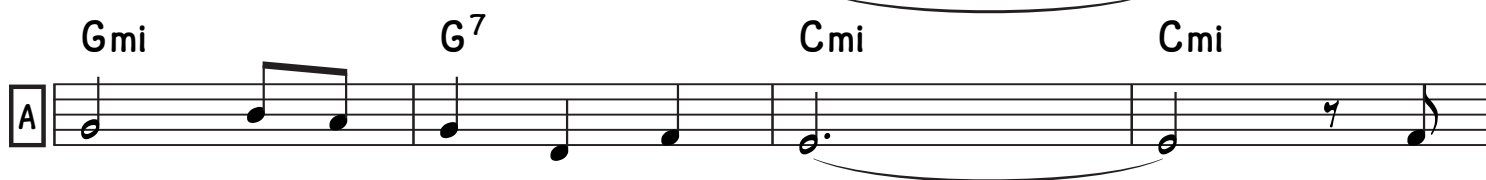
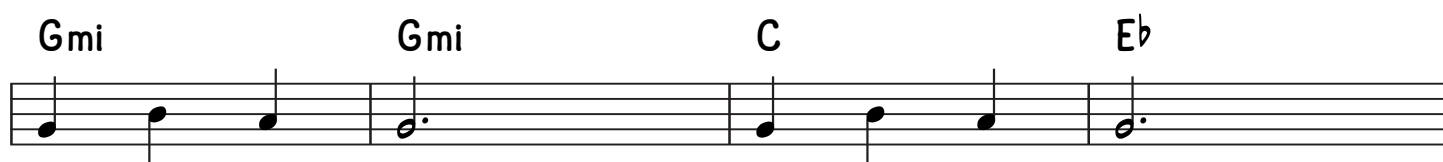
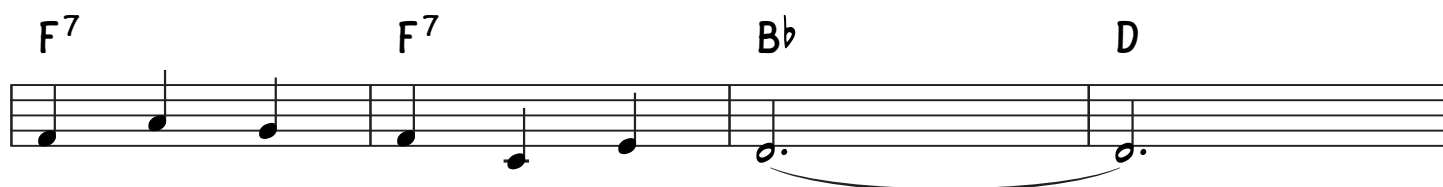


BALLAD**Kol B'romoh****INTRO**

B

Gmi G⁷ Cmi Cmi

1. Gmi/D D⁷ Gmi D

2. Gmi/D D⁷ Gmi J=J. Gmi

(Musical notation for section B, measures 1-8, including first and second endings with a 12/8 time signature change.)

MARCH FEEL

C

Gmi Cmi F⁷ B^b

E^b Cmi D⁷ Gmi

Gmi Cmi F⁷ B^b

E^b Cmi D⁷ Gmi

(Musical notation for section C, measures 9-16, in 2/4 time.)

